

Identifying appropriate sequencing platforms that will efficiently meet your research goals

Funded by the Department of Science and Technology (DOST) - Philippine Council for Industry, Energy, and Emerging Technology Research and Development (PCI-ERTD), DNA Sequencing Core Facility (DSCF) was integrated to the day-to-day operations of the University's Philippine Genome Center by late 2013. Both the DNA Sequencing Core Facility and the Core Facility for Bioinformatics began offering laboratory and technical services pertinent to genomics and bioinformatics research.

[SCAN CODE]

Contact Us

ADDRESS	Philippine Genome Center Building A. Ma. Regidor Street University of the Philippines Diliman Quezon City 1101, Philippines
LANDLINE	+63 • 2 • 8981 • 8500 local 4707
EMAIL	dnasequencing@pgc.up.edu.ph pgc@up.edu.ph
WEBSITE	https://pgc.up.edu.ph

UNIVERSITY OF THE PHILIPPINES
PHILIPPINE GENOME CENTER

DNA Sequencing Core Facility

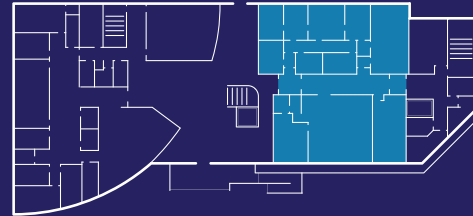
DSCF



ABOUT THE FACILITY

Identifying appropriate sequencing strategies to efficiently meet research goals. DSCF offers a full range of DNA sequencing services from single gene sequencing of capillary sequencers to medium and high-throughput sequencing of Illumina, Ion Torrent and PacBio platforms. It is a central facility that accepts sequencing service requests from clients, conducts quality control tests, analysis and characterization to samples, and provides consultation on the selection of technology platforms in the most cost-effective, reliable and efficient way possible.

LOCATION




SERVICES OFFERED

- + Nucleic Acid Extraction
- + Nucleic Acid Quantification
- + Polymerase Chain Reaction (PCR)
- + PCR Purification
- + Sanger Sequencing
- + Library Preparation
- + Next Generation Sequencing
- + Equipment Use
- + Trainings (available upon request)

APPLICATIONS

- + Whole Genome Sequencing
- + Whole Exome Sequencing
- + Transcriptome Sequencing (RNA-Seq)
- + 16S Metagenome Sequencing
- + Amplicon / Targeted Sequencing
- + Genotyping

TECHNOLOGIES

- + Ion Torrent PGM (100MB- 1GB)
- + Ion Torrent Proton (10GB)
- + MiSeq RUO (15GB)
- + MiSeq FGx (15 GB)
- + NovaSeq 6000 (3000 GB)
- + NextSeq 500 (120 GB)
- + PacBio Sequel (20GB)
- + Affymetrix GeneTitan Microarray

WORKFLOW

Sample
Preparation

Library
Preparation

Sequencing

Initial Data
Processing

Data Analysis